



ALTAIR ENGINEERING INSPECTIONS PTE LTD

18. Project Name: PAUT/TOFD/UT/Immersion UT

Client: Cameron, Singapore

Project Year: 2009-Till Date

Description

- Altair is an approved vendor for Cameron and its subsidiaries in Asia to provide PAUT inspection on Surface and Subsea components (Conductor housing welds, Blow Out Preventor, Choke & Kill, Immersion UT of clad etc). Thickness ranging 10mm to 160mm with complex shapes (limited access). We have developed special techniques to address 100% weld inspection with restricted access. We made special scanners to inspect BOP weldments from OD and ID surface.

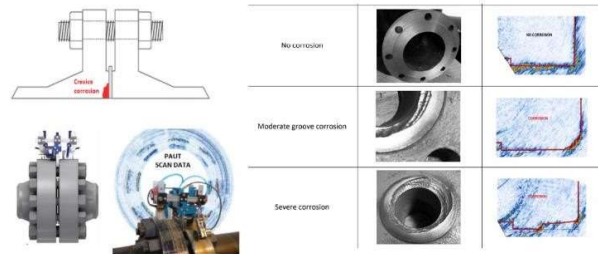


Additional Services - (Present & upcoming Services)

- PAUT on Tube-to-Tube sheet welds
- Available customized solution to inspect the tube sheet welds with our own designed tube ID scanner & special PAUT probes.
- Inspection at fabrication stage & in service stage can be performed.



- Flange Seating crevice corrosion using PAUT and TOFD.
- Inspection can be performed as in service to cover flange face corrosion monitoring.
- Bolt hole crack detections



- Drone UT Inspection for thickness measurement (Application on Storage Tanks, Towers etc). We are in process of acquiring this product and licence to operate in couple of months





ALTAIR ENGINEERING INSPECTIONS PTE LTD

- Bolt Inspection with PAUT.
- To inspect the bolt & nut threaded region for any service cracking.
- Necking or thinning of bolts can be monitored.



- In progress of providing service with LRUT, MRUT, CUPS & TAPS inspections.
- With Innerspec Volta portable unit which facilitates EMAT transducer application in advanced UT techniques.

